



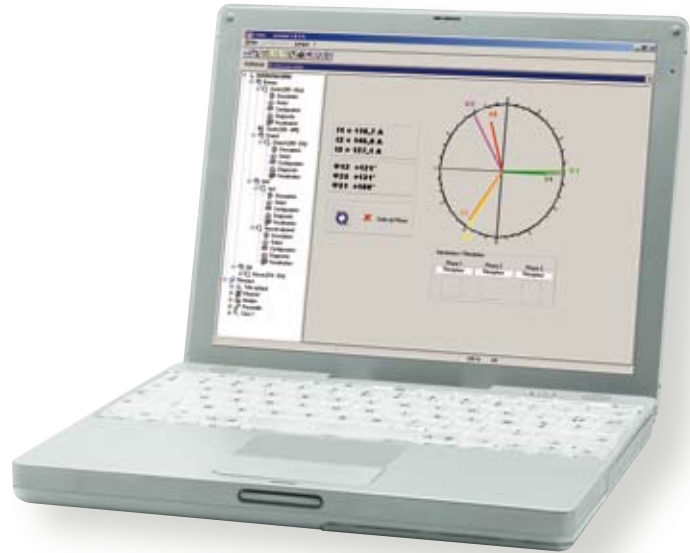
E.SET, E.VIEW and E.VIEW +

Configuration, installation diagnosis and display software for the ENERIUM range of power monitors

Energy performance Associated products

PRODUCT ADVANTAGES

- + CONFIGURATION**
of the whole range of ENERIUM power monitors
- + DIAGNOSIS**
of the installation
- + DISPLAY**
of the electrical parameters
- + PROVISION**
of the recordings in .txt format



► Description

The **E.Set** software allows remote configuration of the power monitors in the ENERIUM range via the RS485 network, the Ethernet network or the optical head. With **E.Set**, it is possible to program at any time the products' communication parameters (address, speed, parity, etc.) and the configuration parameters (CT ratio, VT ratio, alarm thresholds, etc.).

E.View enables the inputs and outputs of the ENERIUM power monitors to be controlled remotely. **E.View** also allows display of the electrical parameters and retrieval in .txt format of the recordings of the load curves, the trend curves and the alarm log.

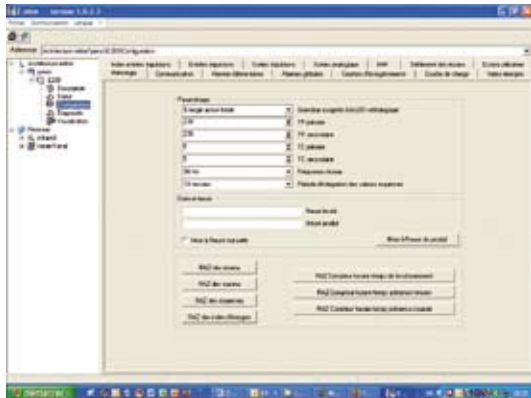
In addition, **E.View+** offers automatic elementary tables, bargraphs and curves.

Functionality	E.Set	E.View	E.View +
Description	•	•	•
Status	•	•	•
Configuration	•	•	•
Diagnosis		•	•
Display		•	•
Graphs			•



ASRAS Co.,LTD
1694, 1694/1 Prachasongkhro Road.
Dindaeng, Dindaeng, Bangkok 10400
Tel. 02-692-3980, Fax. 02-692-3978
E-mail : sales@asras.com
Website : www.asras.com ; www.asras.co.th

E.SET



► Description

- The tabs are used to define the hardware status of the Enerium and the functional use of the inputs (on-off) and outputs (analogue or on-off)
- Details of the slots: analogue output card, on-off I/O card
- Communication (Ethernet, RS485)

► Configuration of the ENERIUM power monitors

- Configuration of the communication parameters
- Modification of the date and time
- Configuration of the CTs, VTs, alarm status, thresholds, etc.
- Adjustment and activation of the alarms
- Programming of the analogue outputs
- Programming of the inputs/outputs
- Zero reset of the meters, the overruns, the log, etc.

► Networking assistance

- Communication test on a power monitor chosen among the monitors in the RS485 or Ethernet network
- Automatic detection of all the products in the RS485 or Ethernet networks, with display of the communication parameters (address, speed, parity, stop bit) and the type of configuration (CT and VT ratios) for each power monitor

► Status

This page is used solely to view the status of the Enerium (voltage and current inputs, phase order, time synchronization, elementary alarms, global alarms, pulse and analogue outputs).

- Operation (correct or incorrect) of the voltage, current and phase order quantities
- Status of the global alarms
- Status of the elementary alarms
- Status of the pulse outputs and analogue outputs

► Backup and loading of configurations

- Saving and import of a configuration
- Downloading of a configuration from one power monitor onto another power monitor via the PC
- Writing of the new configuration
- Self-diagnosis of the configuration

► Customization of the screens

- Programming of the 3 customizable screens

► Means of communication

- Ethernet
- RS485/RS232
- Modem
- Optical head (infrared)

Model	Reference
E.Set software	P01330501

► Associated products

ENERIUM
Power monitors

► page 54



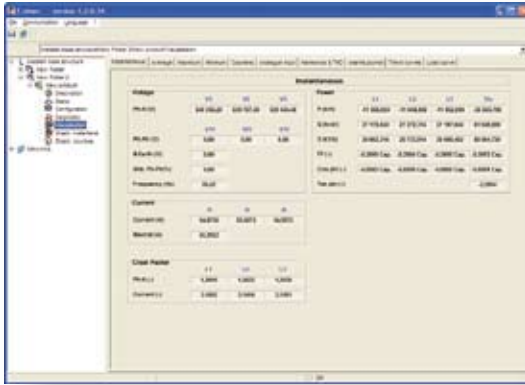
ENERIUM
Optical reading head

► page 54





E.VIEW



► Same basic characteristics as E.Set

► Display of the basic parameters

- Supervision of the electrical network by displaying the essential parameters measured by ENERIUM
- Consultation of the instantaneous and average values of the electrical quantities required to operate the electrical network
- Examples of display possibilities
 - Instantaneous values
 - Instantaneous extreme values
 - Maximum/minimum power values
 - Energy meters
 - Maximum odd harmonic values per order
 - Total harmonic distortion (THD)
 - Alarm log
 - Trend curves
 - Load curves

► Remote control of the inputs/outputs

All the inputs and outputs can be controlled remotely and separately. This function can be used, for example, to simulate an analogue output in order to verify the integration of an ENERIUM power monitor in the process.

► Retrieval of the records in .txt format

- Load curves
- Trend curves
- Alarm log

► Diagnosis of the installation

This page can be used to read the digital inputs, as well as to read and/or force the digital and analogue outputs of ENERIUM.

- This concerns:
 - Pulse inputs
 - On-off inputs
 - On-off outputs
 - Analogue outputs
- Detection of phase order reversal
 - Presence of voltage
 - Presence of current
 - Status of the current ratings being used by the power monitor
 - Indication of the generator/receiver mode of phases 1, 2 and 3
- Status of the alarms
- Status of the alarm relays
- Detection of external time synchronization errors
- Malfunction of an option card
- Saturation and possible loss of a pulse on the on-off outputs
- Trend curve memory occupancy
- Load curve memory occupancy

Model	Reference
E.Set software	P01330601

► Associated products

ENERIUM
Power monitors

► page 54

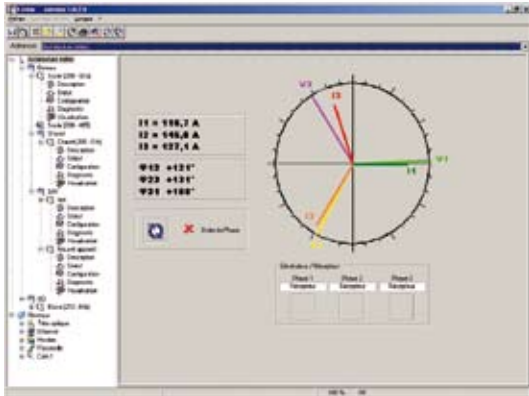


ENERIUM
Optical reading head

► page 54



E.VIEW +



▶ Same basic characteristics as E.View

▶ Load curve graphing tab

Users have the possibility of viewing several quantities at the same time and positioning horizontal or vertical reference lines. A zoom function is also available. This tab includes an information area and tables for each curve.

▶ Trend curve graphing tab

The logic is the same as for the load curve graphing tab.

▶ Fresnel tab

This comprises 3 different tabs: 3V, 3I or 3V+3I. The information is refreshed in real time. For each of the tabs, there is an information area (mode: inductive/capacitive, receiver/generator, phase order OK or not).

Example: the Fresnel diagram of the 3 phase voltages (3V): instantaneous values of the phase voltages and the values of the phases.

▶ Harmonics tab in table format

- Harmonics order by order in V&I or U&I.
- The data is presented in table form.
- X axis: V1 [%] V2 [%] V3 [%] I1 [%] I2 [%] I3 [%]
- Y axis: the orders: 1, 2, 3 ... 50, with the possibility of other classifications: odd value multiple of 3, odd value not a multiple of 3, or even only.

▶ Harmonics tab in graph format

- 8 graph pages in bargraph format with the same logic as the table format:
 - 50 harmonic orders in V&I
 - 50 harmonic orders in U&I
 - Odd harmonics not a multiple of 3 in V&I
 - Odd harmonics not a multiple of 3 in U&I
 - Odd harmonics multiple of 3 in V&I
 - Odd harmonics multiple of 3 in U&I
 - Even harmonics in V&I
 - Even harmonics in U&I

Model	Reference
E.Set software	P01330610

▶ Associated products

ENERIUM
Power monitors

▶ page 54



ENERIUM
Optical reading head

▶ page 54



ASRAS Co.,LTD
 1694, 1694/1 Prachasongkhro Road.
 Dindaeng, Dindaeng, Bangkok 10400
 Tel. 02-692-3980, Fax. 02-692-3978
 E-mail : sales@asras.com
 Website : www.asras.com ; www.asras.co.th